

Diagram illustrating the wiring for a 1982-1983 8 Pin connector, showing connections for various components and ground.

**Top Connector (Facing Empty Connector):**

- White/Red Idle Pick Up
- Black/White Pick Up -
- White/Green Advanced Pickup.
- Black Ground
- Orange Coil -
- Red/White Kill Switch

**Bottom Connector (gonzo Ignitor):**

- Pickup +
- Pickup -
- N/C
- Coil - Orange
- Ground Black

**Wiring Connections:**

- White/Red Idle Pick Up (Top) connects to Pickup + (Bottom).
- Black/White Pick Up - (Top) connects to Pickup - (Bottom).
- Orange Coil - (Top) connects to Coil - Orange (Bottom).
- Red/White Kill Switch (Top) connects to N/C (Bottom).
- Black Ground (Top) connects to Ground Black (Bottom).

**Additional Labels:**

- 1982-1983 8 Pin
- Latch
- Notch

1982-1983  
8 Pin

## Facing Empty Connector



\*\*\*\*\*Note\*\*\*\*\*

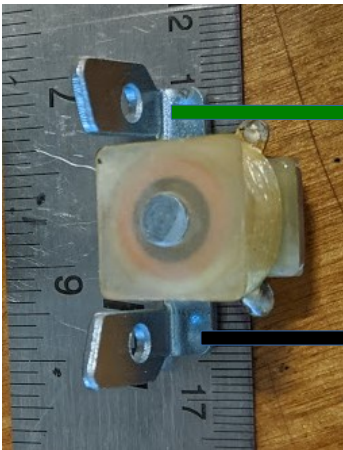
This a basic diagram to add a  
Gonzo Ignition to a none TCI  
XS650 alternator.



Rotor with added magnet  
And  
Pickup added to cover

\*\*\*\*\*Note\*\*\*\*\*

The polarity of the green and  
black may have to be reversed  
depending on polarity of the  
magnet and coil



gonzo Ignitor

Pickup +

Pickup -

Red/White  
Kill SW.

N/C

Coil -  
Orange

Ground  
Black

Kill Switch

Coil +  
Red/White

Coil -  
Orange



Even viewing this drawing can be dangerous to your health

Do not blame me for any fires, warp holes, hivoltag arcs and / or any number of other poor outcomes

You have been warned

\*\*\*\*\*Note\*\*\*\*\*

\*\*\*\*\* Caution \*\*\*\*\* Caution \*\*\*\*\*

\*\*\*\*\* Caution \*\*\*\*\* Caution \*\*\*\*\*

\*\*\*\*\*Note\*\*\*\*\*  
The Red/White wire goes to  
coil as brown. (I Think)