

clutch assembly correctly as illustrated in the figure, and tighten the nut to specification.

Tightening torque:

53.5 ~ 75.0 in-lb (7.0 ~ 10.0 m-kp)

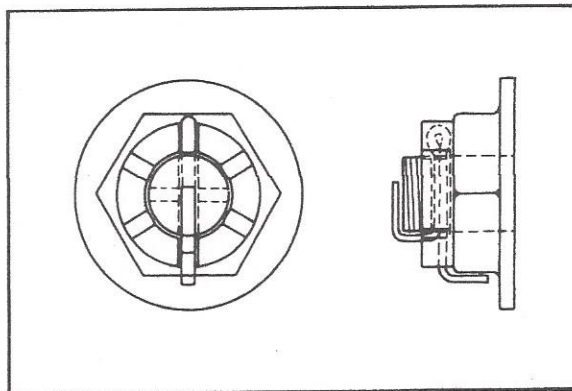
3. Lock the nut with the cotter pin (r-10). The pin should be inserted downward, and the pin ends should be bent.
4. Tighten the wheel shaft holder nut.

Tightening torque:

70 ~ 110 in-lb (0.8 ~ 1.3 m-kp)

CAUTION:

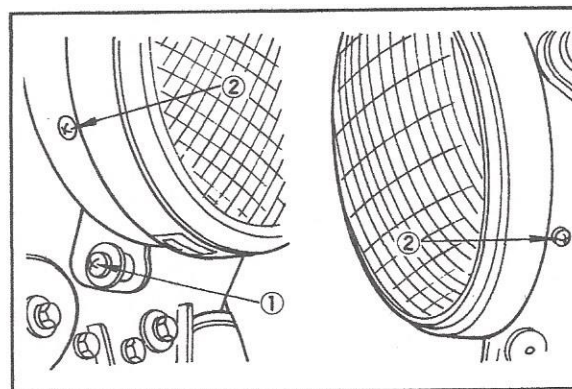
Tighten axle holder nuts in stages and maintain an equal gap on each side.



Remove the two Phillips-head anchor screws, one each, from the lower right and left parts of the headlight shell. Insert a slotted-head screwdriver between the shell and the lens assembly mounting ring on the bottom of the headlight shell, and pry out the lens assembly.

NOTE:

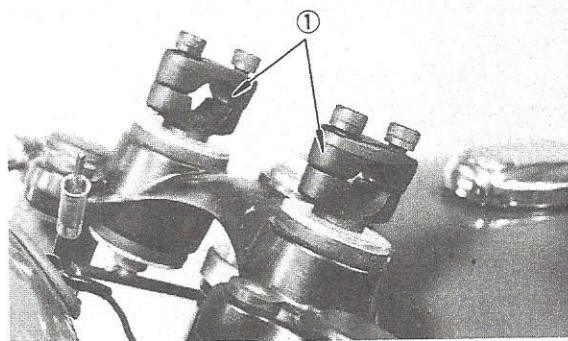
Care should be taken not to scratch the headlight shell with the slotted-head screwdriver. Also be careful not to lose any screw.



1. Holding screw
2. Anchor screw

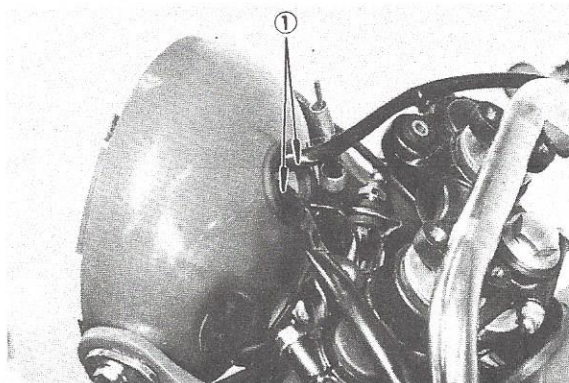
Handlebar installation

1. Remove the four hexagon bolts, and remove the two handlebar holders.



1. Handlebar holder

2. Insert the lead wire coming from the handle switch into the grommet attached to the headlight body.



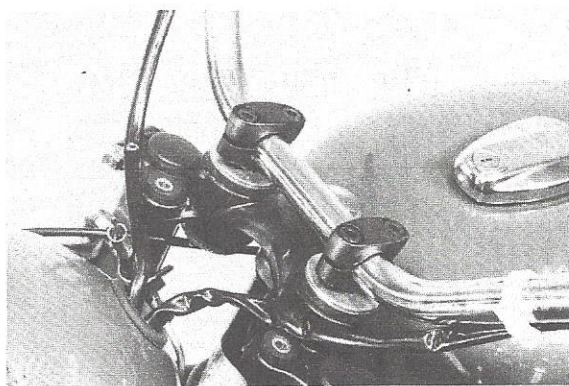
1. Lead wire

3. Install the handlebar using the two removed upper holders and four hexagon bolts.

Tightening torque:

160 ~ 230 in-lb (1.8 ~ 2.5 m-kg)

4. Install the four bolt caps (r-20).

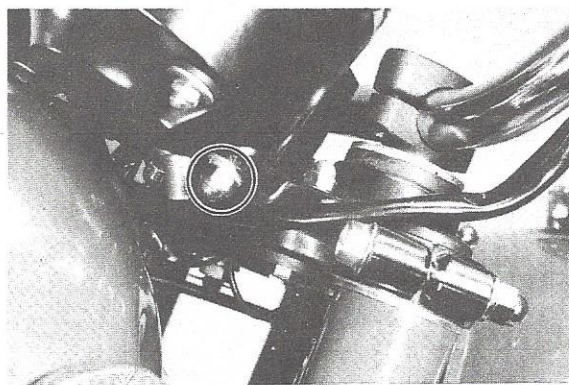


Meter bracket installation

Using the bolts and nuts contained in the vinyl bag (c), install the meter bracket assembly on the handle crown.

NOTE:

Before securing the meter bracket, all wires should be threaded through the headlight body grommet. Take care not to kink wires by pressure.



Throttle wire installation

1. Remove the two screws securing the right handle switch assembly, and separate the switch assembly into the upper and lower halves.

